

SD HOST TESTER SGDK320 A

SD Ver3.00
SDIO Ver3.00
eMMC Ver4.51



SGDK320 A

SGDK320A has three function, SD Host Tester, SD Card Emulator and SD Card/eMMC Bus Analyzer.

Feature

SGDK320A has three functions:

1. SD Host Tester
2. SD Card Emulator
3. SD Card/eMMC Bus Analyzer

SGDK320A supports up-to-date media in the market.

SGDK320A provides simple and straightforward user interface to operate.

Application software on Windows PC is very easy to use, and downloadable to see Log file.

Supported media

[SD card ver3.00]

- SDSC up to 2GB
- SDHC up to 32GB
- SDXC up to 2TB
- SDR12/SDR25/SDR50/DDR50/SDR104

[SDIO card ver3.00]

- 1bit/4bit/8bit
- UHS-I (208MHz)
- 2KB block length / Interrupt

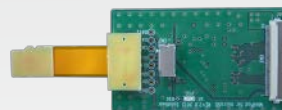
[eMMC ver4.51]

- 1bit/4bit/8bit
- HS200 (200MHz)
- Boot operation

Mini PODs



Mini POD for SD card



Mini POD for micro SD card



Mini POD for eMMC/SDIO wire type

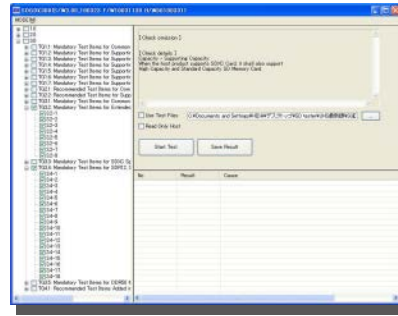


Mini POD for eMMC socket type

SD Host Tester

SGDK320A covers 50% items of SD Memory Card Physical Test Specification for SD Host Products version 3.00. The items include initialization sequence include CMD11, read/write/erase protocol as normal operation as well as abnormal conditions like BSY timeout, initialization time out and CRC errors.

(*) Tests about DC and AC characteristics are out of scope of this tester.

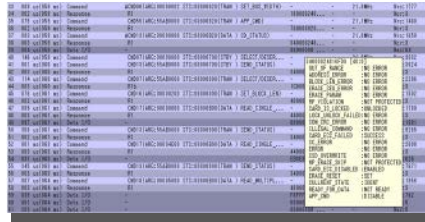


SD Card Emulator

SGDK320A can emulate functions of SD Cards which are compliant with SD Memory Card Physical Specification Version 3.01. During emulation, SGDK320A monitors bus activities between host system and SGDK320A. Emulation covers Speed Class (2,4,6,10). In addition, some conditions for "real" SD cards difficult to control such like BSY time, Initialization time, CRC errors, can be programmed as well as the registers (CID, CSD1/2, SCR, OCR1/2, SD_STATUS).

SD Card/eMMC Bus Analyzer

SGDK320A has SD card and eMMC Bus Analyzer function. With using microSD form flexible cable, microSD Host product can be analyzed. SGDK320A supports 8bit eMMC. Triggers can be set at CMD, Response, Address of read/write data and BSY time. Trigger signals to/from external instruments are supported.



Reference Specifications

SD Memory Card Physical Layer Specification Version 3.00

SDIO Specification Version 3.00

Embedded Multimedia Card (eMMC) Electrical Standard 4.51

SGDK320A Set

Main BOX

Log trace memory: 256MB, USB2.00

Mini POD (SD, microSD, eMMC/SDIO wire type and socket type)

5V output AC Adaptor (100-240V)

POD cable, USB cable

Application software for Windows(CR-ROM)

Recommended Control PC

Windows 7/Vista/XP/2000 (32bit/64bit version)

Intel Pentium4 2GHz and more

1GB RAM

USB 2.00 port

For further Information



SolidGear Corporation

ShinYokohama Kaneko Bldg 8F
2-3-9 ShinYokohama, Kohoku-ku, Yokohama,
222-0033 Japan

info@solidgear.co.jp

Tel +81-45-470-4511 Fax +81-45-470-4311

www.solidgear.co.jp