

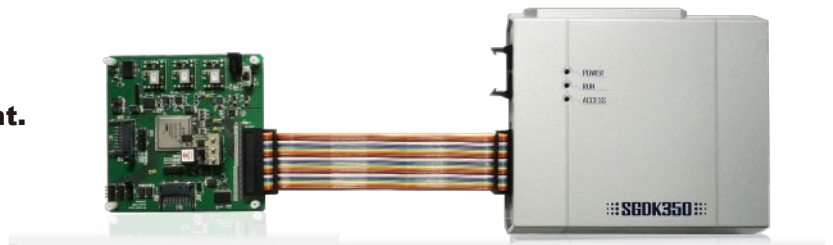
SD CARD TESTER SGDK350

SDXC & UHS-I

SD CARD TESTER – SGDK350 provides SD Card design engineers, field application engineers and quality engineers with comprehensive solution.

Functions:

- 1. Speed Class measurement for SDXC and SDHC**
- 2. Quick performance measurement.**
- 3. SD Card access library for Microsoft Visual Studio.**



Features:

Easy to use

SGDK350 provides simple and straightforward user interface to operate. By using the application software on Windows PC, conditions for performing SD commands can be easily set.

SD Card access library

The user can issue any SD Command with any sequence and measure busy time by using access library. (For Microsoft Visual Studio)

Supported media

[Capacity]

SDSC up to 2GB
SDHC up to 32GB
SDXC up to 2TB

[Transfer mode]

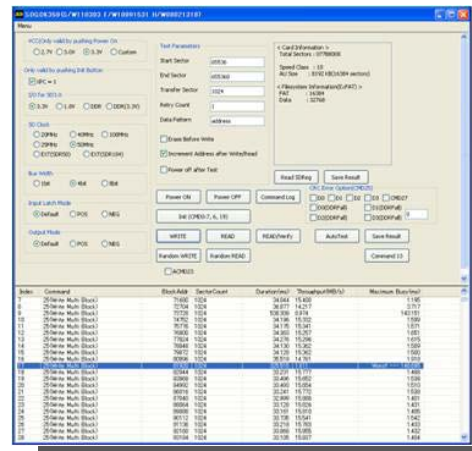
Default Speed
High Speed
1.8V IO SDR12, 25, 50,104(208MHz)
1.8V IO DDR50(50MHz)

[VCC]

2.5V to 3.6V

Speed Class measurement

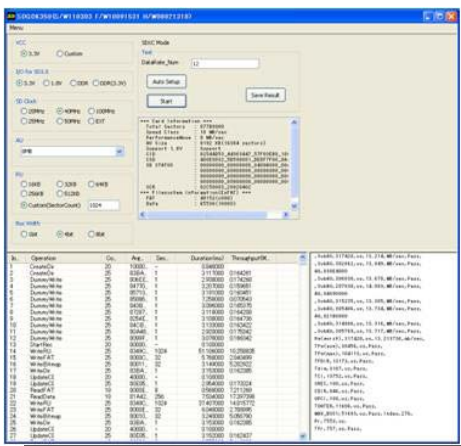
SGDK350 can automatically set conditions and measure Speed Class from 2 to 10. Measured performance of each AU and SD Command are displayed on the PC screen and are stored in log file.



Quick performance measurement

SGDK350 can measure performance of sequential/random access in specified area. The user can set transfer mode, bus width, VCC and frequency.

SGDK350 can generate write data which has CRC Error to check error handling of the SD Card.



SGDK350 set

SGDK350 Card Tester

Trace memory:256MB

USB 2.0 I/F

5V Output AC Adaptor x2

Windows Application Software (CD-ROM)

Windows SD Card Access library

Recommended Control PC

Windows 7/Vista/XP (only for 32bit)

Intel Pentium4 2GHz and more

1GB RAM

USB 2.0 Port

For further Information